



City of Abilene

Mayor's Advisory Board for People with Disabilities Agenda

Notice is hereby given of a meeting of the Mayor's Advisory Board for People with Disabilities of the City of Abilene to be held on November 18, 2025, at 3:00PM at City Hall, 2nd Floor, City Council Chambers, 555 Walnut, Abilene, Texas, for the purpose of considering the following agenda items.

CALL TO ORDER

PUBLIC COMMENTS

Public Comments on Any Item on the Agenda

MINUTES

1. Approval of Minutes (Discussion and Action)

AGENDA ITEMS

2. G.V. Daniels Playground (Discussion, Public Hearing and Possible Action)
3. Airport Improvements (Discussion, Public Hearing, Possible Action)
4. Marketing Videos (Discussion)
5. CityLink Report (Discussion)
6. Upcoming Board Topics (Discussion)

- This item allows board members to recommend topics to be included and discussed at future board meetings.

ADJOURNMENT

Notice

In compliance with the Americans with Disabilities Act, the City of Abilene will provide for reasonable accommodations for persons attending meetings. To better serve you, requests should be received forty-eight (48) hours prior to scheduled meetings. Please contact the City Secretary's Office at 325-676-6208. Telecommunication device for the deaf is 325-676-6360.

CERTIFICATION

I hereby certify the above meeting notice was posted on the bulletin board at the City Hall of the City of Abilene, Texas, on the 12th day of November, 2025, at 2:25 p.m.

Kaitlin Richardson, Deputy City
Secretary, TRMC

Approval of Minutes

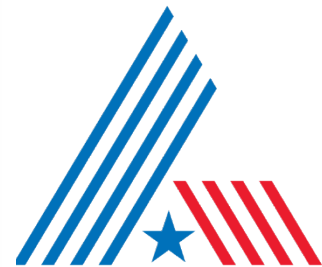
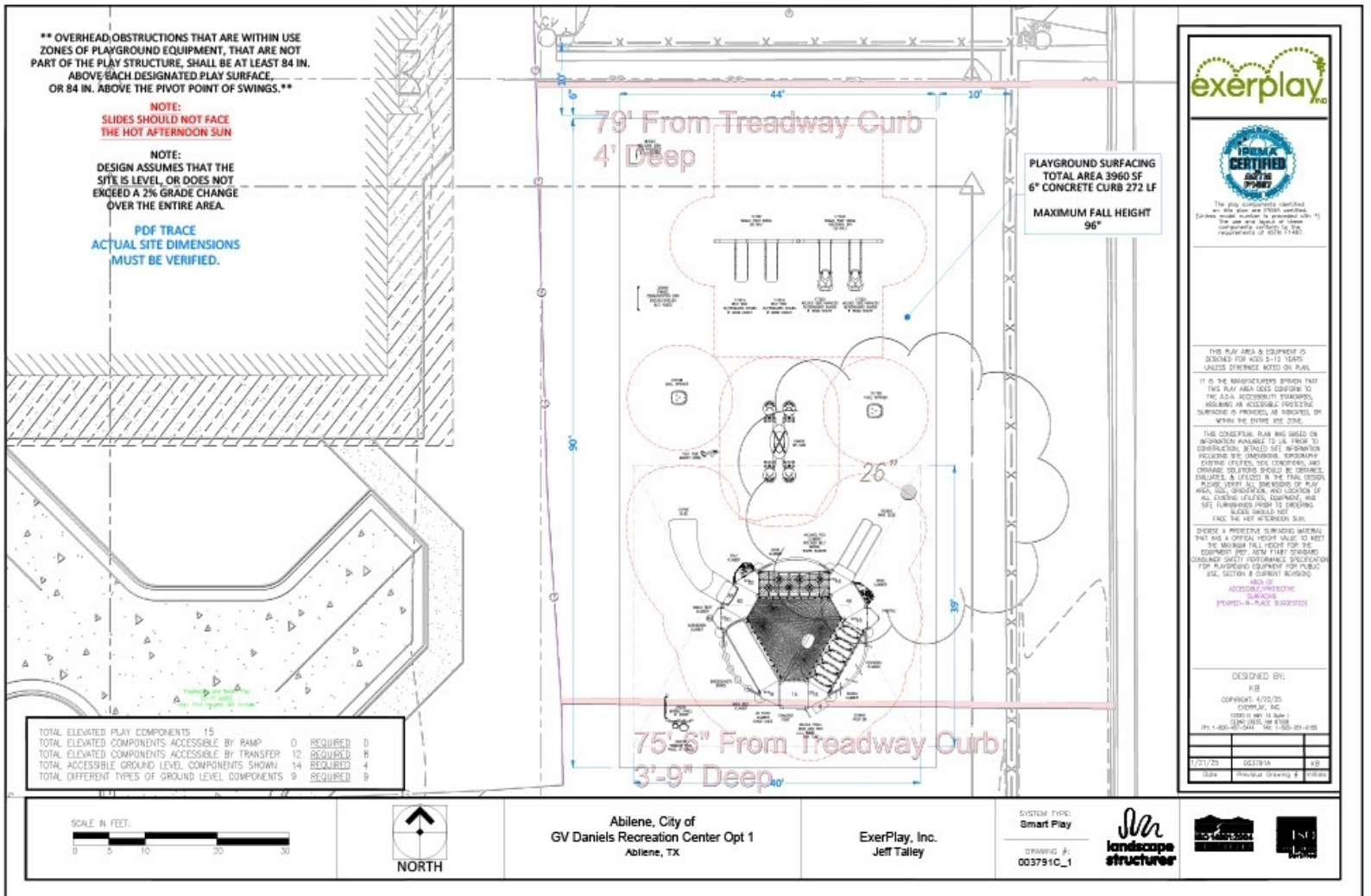


G.V. Daniels Playground





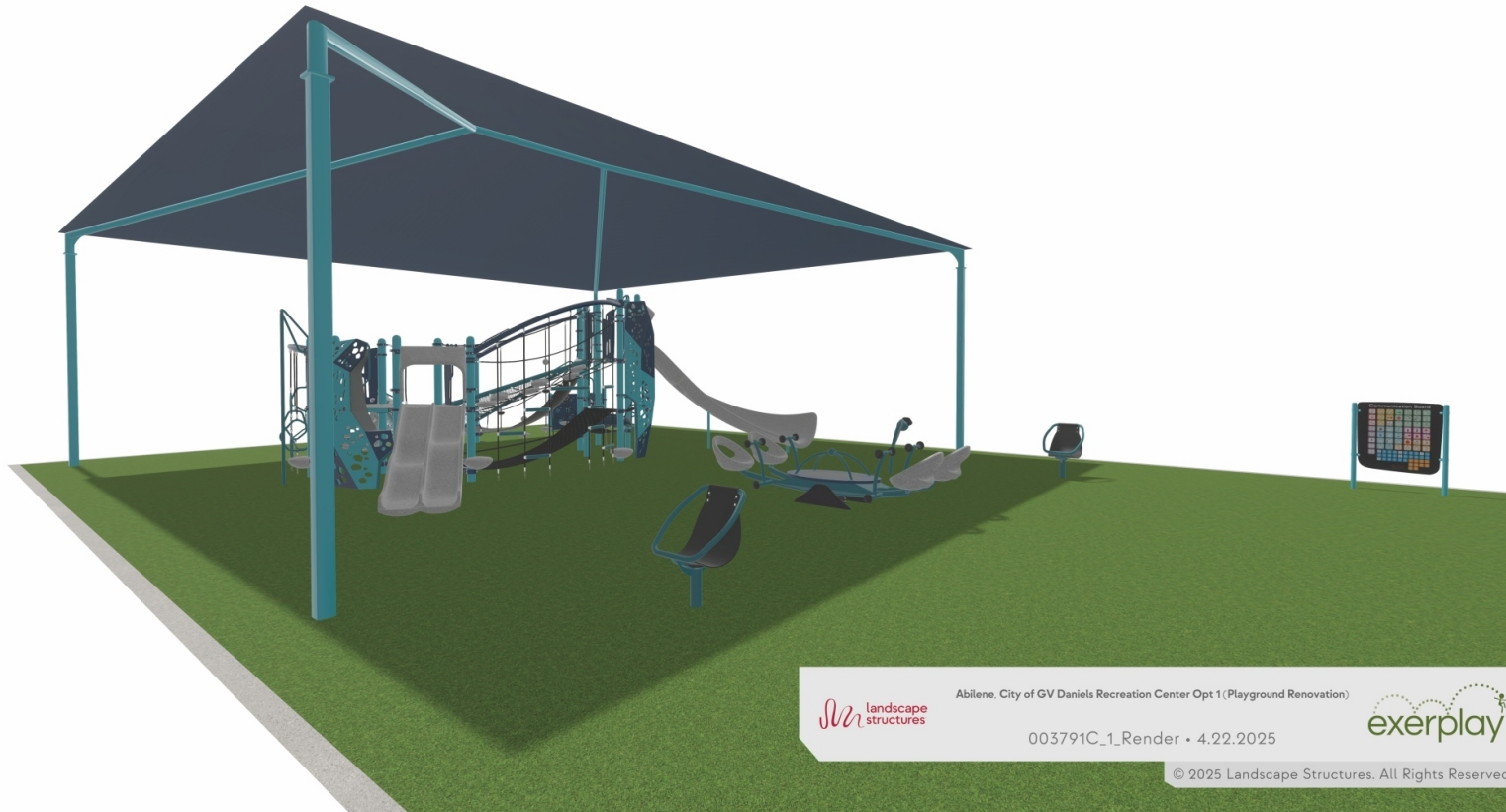
G.V. Daniels Playground



CITY OF
ABILENE
TEXAS



G.V. Daniels Playground



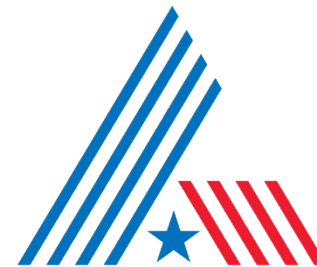
landscape structures

Abilene, City of GV Daniels Recreation Center Opt 1 (Playground Renovation)

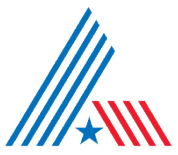
003791C_1_Render • 4.22.2025

exerplay

© 2025 Landscape Structures. All Rights Reserved



CITY OF
ABILENE
TEXAS



G.V. Daniels Playground



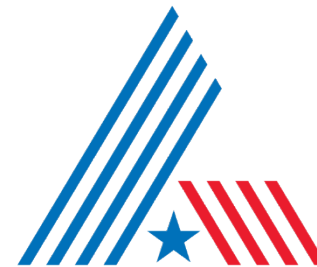
landscape structures

Abilene, City of GV Daniels Recreation Center Opt 1 (Playground Renovation)

003791C_1_Render - 4.22.2025

exerplay

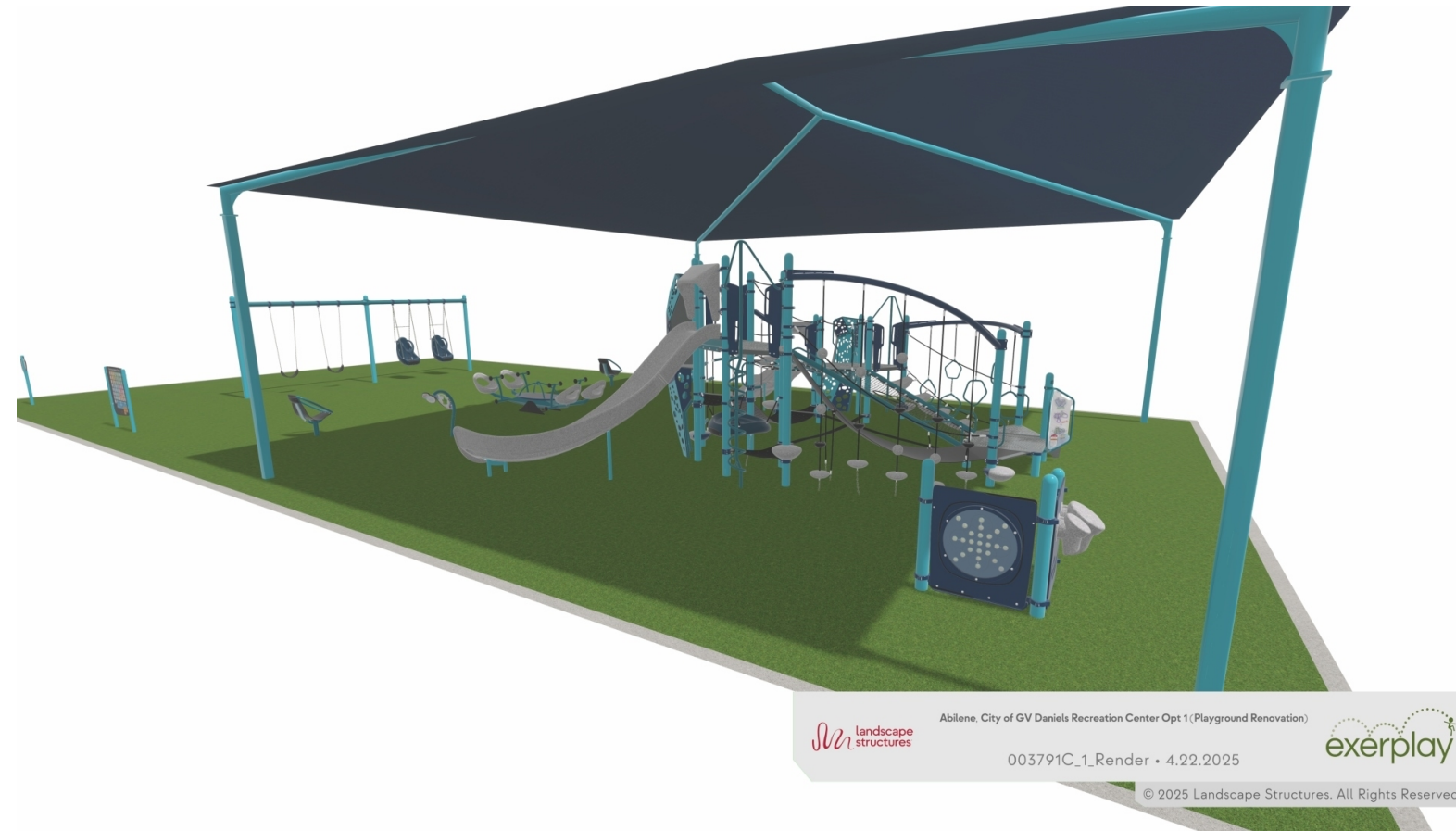
© 2025 Landscape Structures. All Rights Reserved



CITY OF
ABILENE
TEXAS



G.V. Daniels Playground



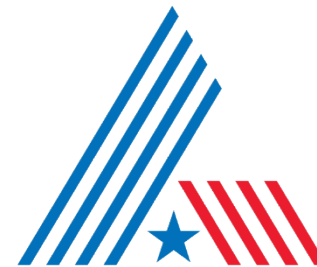
landscape structures

Abilene, City of GV Daniels Recreation Center Opt 1 (Playground Renovation)

003791C_1_Render • 4.22.2025

exerplay

© 2025 Landscape Structures. All Rights Reserved



CITY OF
ABILENE
TEXAS



G.V. Daniels Playground

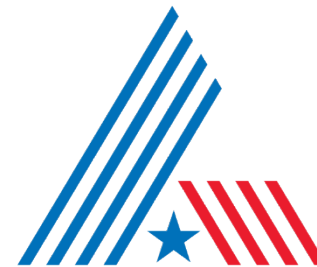


Abilene, City of GV Daniels Recreation Center Opt 1 (Playground Renovation)

003791C_1 • 4.22.2025



© 2025 Landscape Structures. All Rights Reserved



CITY OF
ABILENE
TEXAS

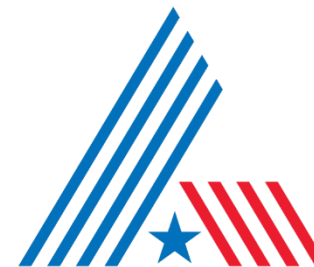
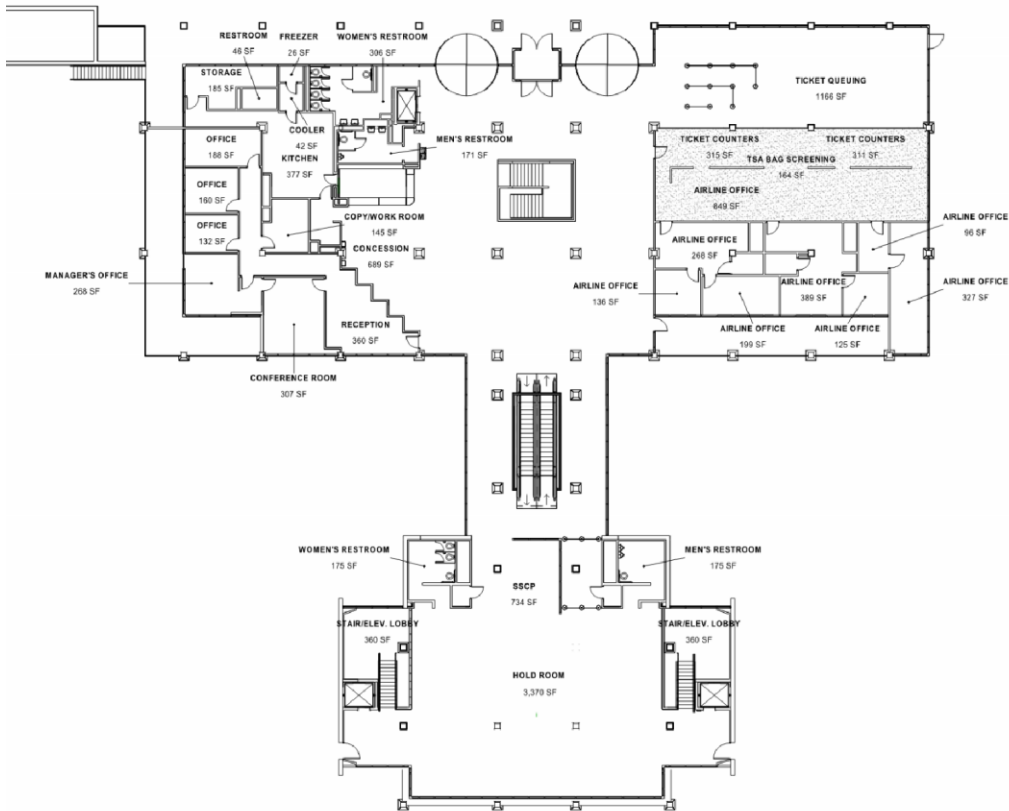
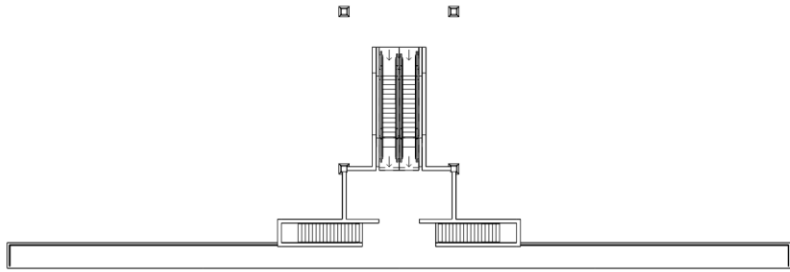
Airport Terminal Expansion and Improvements



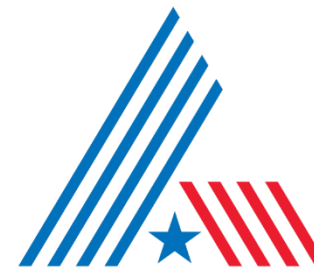
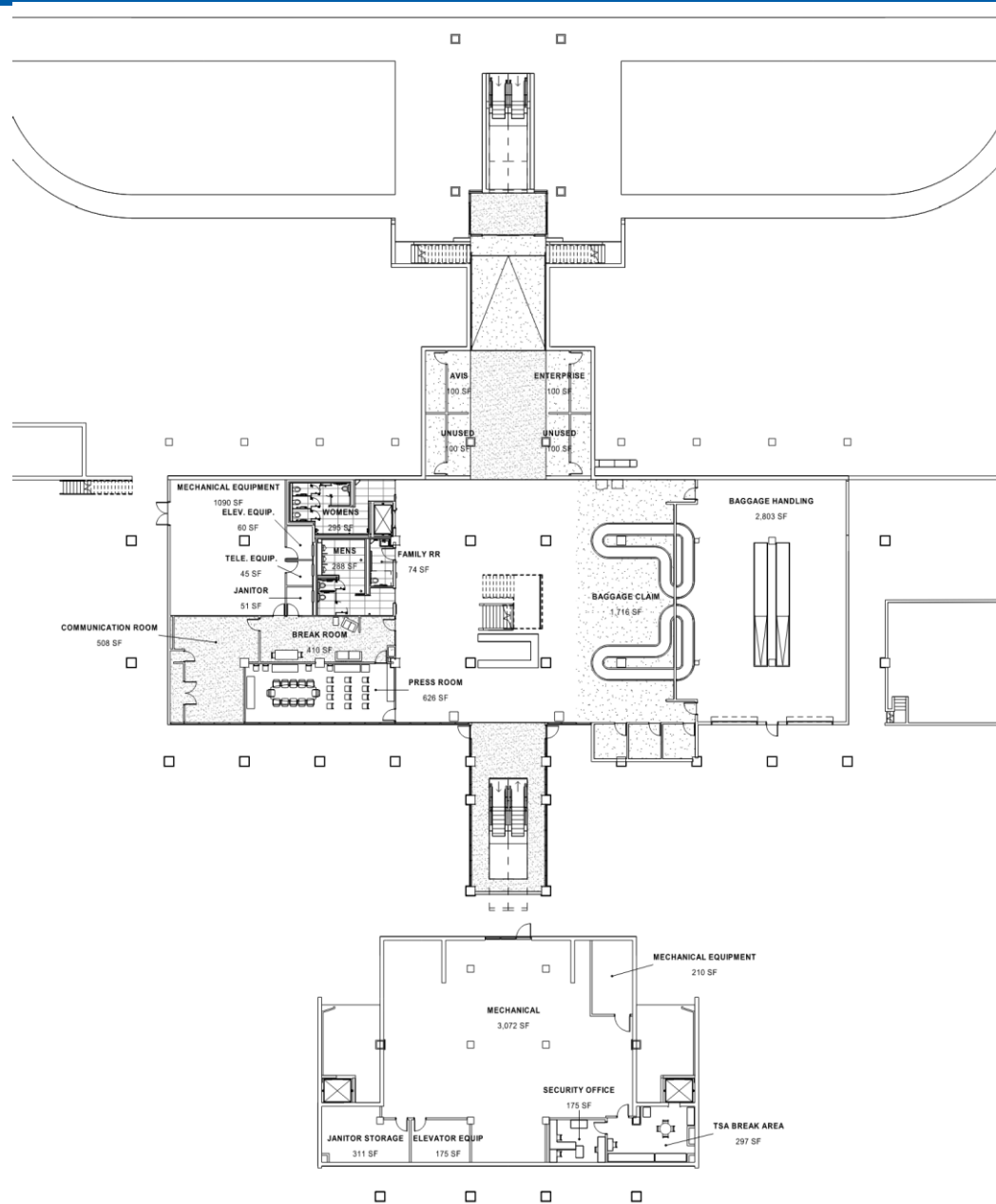
Airport Terminal Expansion and Improvements Concept







CITY OF
ABILENE
 TEXAS



CITY OF
ABILENE
 TEXAS

WHY?

- ABI's Terminal was originally built in 1968 and is in need of significant improvements and expansion of targeted areas, including the Boarding Area to accommodate the larger American Airlines aircraft now serving Abilene.
- The Screening Checkpoint is also crowded with both the regular and PreCheck lanes squeezed into the same space that one lane should be. TSA equipment is evolving and continues to take up more space when added.
- Much of the HVAC equipment and many other mechanical systems (elevators, baggage conveyors, fire alarm system, access control system, and generator) are over 20 years old and have reached, or are approaching, end-of-life (not supported by manufacturers).
- Escalators – Well, we all know about these.

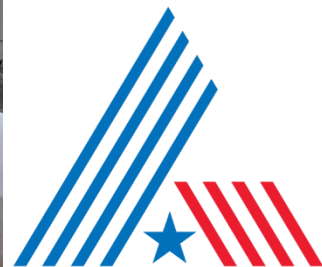




WHY?

- The Boarding Area seats 60 people, but the aircraft seats 76, and we averaged 72% Load Factor last year. So, the space is tight most flights.
- Charter and deplaned diverted passengers can make things even tighter and more uncomfortable.
- Plus, people just don't want to sit shoulder to shoulder with someone they don't know until they have to on board an airplane.





CITY OF
ABILENE
TEXAS



CITY OF
ABILENE
TEXAS

- ABI started with an Enabling Project two years ago that brightened up the terminal interior with new paint and a restroom modernization on the lower level.
- Both elements will carry into future Terminal projects.





Expansion and Improvements Concept

- Airport and other City staff have worked with Parkhill to develop a modern and local aesthetic to create new, more functional spaces that will enable ABI's Terminal to meet our community's future air travel needs.
- The exterior will get a fully-modern facade, lots of glass to maximize sunlight and an open feeling, and still reduce heat build up.
- The upper level driveway will be demolished so all inbound and outbound passengers use the ground level. A third traffic lane is created without taking up parking space.



- All escalators are replaced with larger and more visible elevators, including a glass elevator at the front.
- The Screening Checkpoint is relocated to an area within the current building footprint and has enough room for up to three screening lanes.
- The airline ticket counters are moved downstairs to face the north on the east side of the new ground level lobby.
- The car rental companies are relocated to also face the north on the ground level and will be on the west side.
- The glass elevator will be in the middle.
- Airport Administration offices will be expanded to accommodate current and future uses in one area.

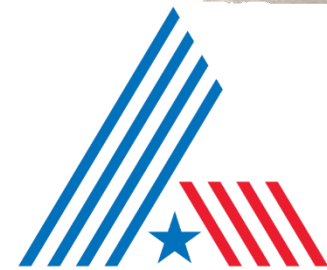




ABILENE REGIONAL AIRPORT | ABILENE, TEXAS | 2024-11-20



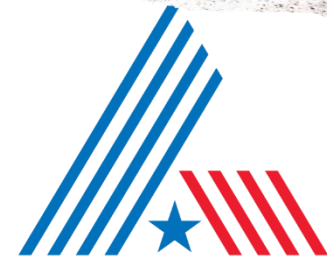
CITY OF
ABILENE
TEXAS



CITY OF
ABILENE
TEXAS



CITY OF
ABILENE
TEXAS



CITY OF
ABILENE
TEXAS



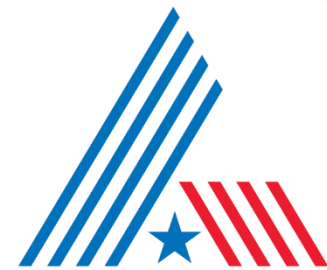
Boarding Area Expansion

- The Boarding Area expands east and west from the existing building, adding almost 5,000 square feet.
- The expansion allows for larger restrooms, an assisted restroom, a nursing mother's room, vending area, VIP/Business space, and seating for up to 200 people.
- A new jet bridge can be added in the future to the center of the building, when needed.
- A glass semi-enclosed balcony allows passengers to escape the inside and feel closer to the aircraft and the bluffs.





CITY OF
ABILENE
TEXAS



CITY OF
ABILENE
TEXAS



- So, the Dilemma is a Terminal built in 1968 with the last major addition made prior to September 11, 2001. A lot has changed.
- The Terminal has served Abilene and our surrounding region well in that time. It still has function for the future, but investments in major changes and updates are needed and must be addressed in the near future, even if we get no additional air service.
- The Issues and Concept are pretty much what you've just seen. The Vision is to create a new Terminal out of the existing one that will make an impact on those using it and a definitive and positive statement on Abilene's future.



The boldness, yet practicality of this project is emblematic of Abilene’s character. It shows pride of place, purpose, and vision for our future.



Marketing Videos



CityLink Report



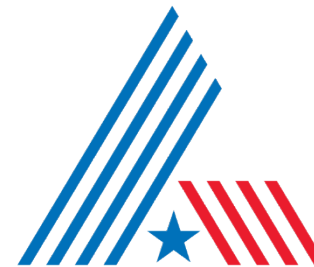


CityLink Report



CityLink ADA Metric Report

PARATRANSIT ADA-PASSENGERS	Jun-2025	Jul-2025	Aug-2025	Sep-2025	Oct-2025
BA1	1,360	2,347	2,102	2,500	3,006
BA2	65	81	74	72	67
ADA PCAs	98	190	199	155	233
Guests	23	34	36	36	32
Citylink ADA Trips	1,546				3,338
Number of Trip Denials	0	0	0	0	0
Number of on time trips	1,899	1,832	1,570	1,825	3,690
Percent On Time	79%	72%	69%	77%	85%
ADA Certifications					
ADA Paratransit Applications Received	69	79	63	40	33
ADA Applications Denied	10	11	6	2	1
ADA Applications Processed Late	5	0	0	0	0
Number of ADA Certified Passengers	2564	2574	2603	2670	2709



CITY OF
ABILENE
TEXAS

Upcoming Board Topics

